

## MICROCAT FOR HONDA - INSTALLATION INSTRUCTIONS

Microcat can be installed to operate in a stand alone or network environment.

Installations of Microcat require a dongle (hardware security key) to be connected to the appropriate computer port. If a dongle is not connected you may be required to select your region and country.

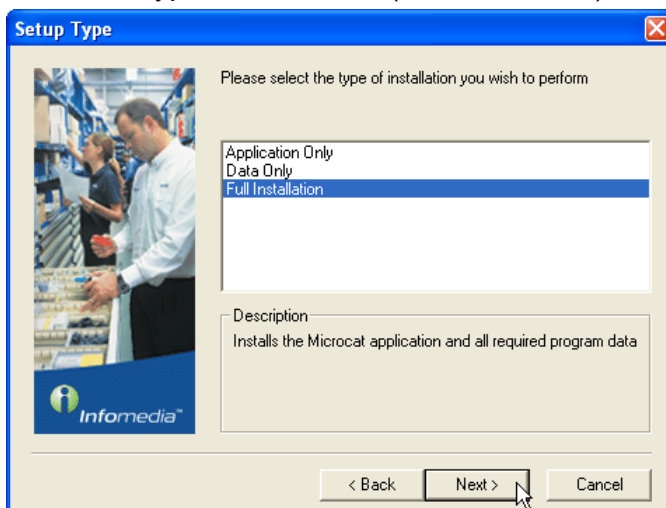
Alternatively, Microcat Authorisation Server (MAS<sup>™</sup>) can be used as the Microcat security measure. For more information on MAS, refer to the MAS installation and user guide posted on the MAS website: <http://imassp.microcat.net/support.htm>

MAS must be used when operating Microcat in a thin client environment such as Terminal Services or Remote Desktop.

### Microcat Stand Alone Installation

To install Microcat:

1. Insert the Microcat CD (Disk 1) in the CD-ROM drive.  
The Microcat Autoplay Menu will display.
2. Click **Install Microcat**.  
If the Autoplay menu does not appear, navigate to the CD-ROM drive and click on **setup.exe**.
3. Click **Next**.
4. Read the End-User Software Usage Agreement, and if you agree with the terms and conditions, click **Yes**.
5. Select the type of installation (**Full Installation**), and click **Next**.



6. Select the drive where the data is to be installed, and click **Next**.
7. Click **Next**.
8. When prompted, insert Disk 2 into the CD-ROM drive, and click **OK**.
9. Confirm the restart option is selected, and click **Finish**.

## Microcat Network Installation

The dealership's System Administrator can install Microcat across a computer network. The recommended configuration is to install the catalogue data on a central server and the application on each workstation.

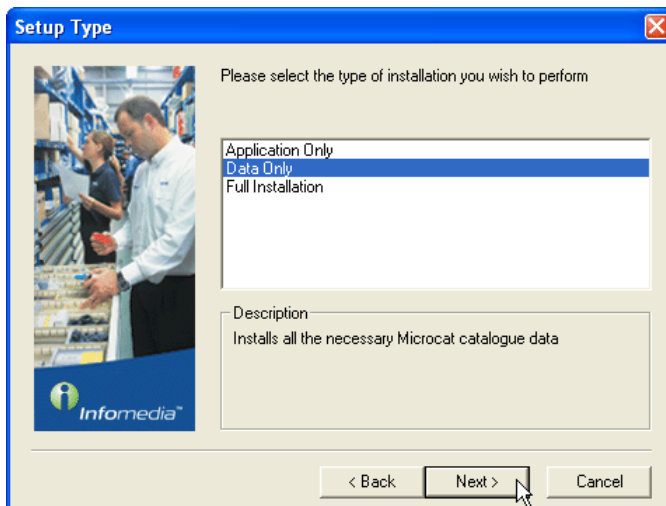
The main steps to be performed are:

- ▶ Install the Microcat catalogue data on the central server.
- ▶ Install the Microcat application on the workstations that will run Microcat.
- ▶ Share the central server with each workstation.
- ▶ Map each workstation to the central server.

### Installing the catalogue data on the server

To install the catalogue data on the server:

1. Insert the Microcat CD (Disk 1) in the CD-ROM drive.  
The Microcat Autoplay Menu will display.
2. Click **Install Microcat**.  
If the Autoplay menu does not appear, navigate to the CD-ROM drive and click on **setup.exe**.
3. Click **Next**.
4. Read the End-User Software Usage Agreement, and if you agree with the terms and conditions, click **Yes**.
5. Select the type of installation (**Data Only**), and click **Next**.

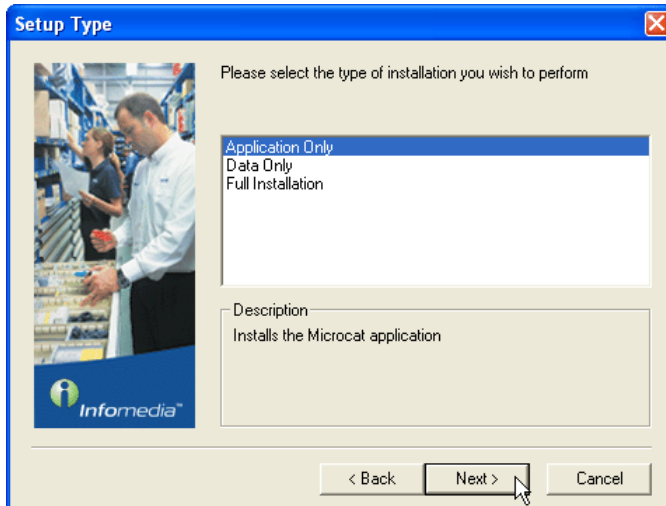


6. Select the drive where the data is to be installed, and click **Next**.
7. When prompted, insert Disk 2 into the CD-ROM drive, and click **OK**.
8. Confirm the restart option is selected, and click **Finish**.

## Installing the Microcat application on workstations

To install the Microcat application on individual workstations:

1. Insert the Microcat CD (Disk 1) in the CD-ROM drive.  
The Microcat Autoplay Menu will display.
2. Click **Install Microcat**.  
If the Autoplay menu does not appear, navigate to the CD-ROM drive and click on **setup.exe**.
3. Click **Next**.
4. Read the End-User Software Usage Agreement, and if you agree with the terms and conditions, click **Yes**.
5. Select the type of installation (**Application Only**), and click **Next**.



6. Click **Next**.
7. Confirm the restart option is selected, and click **Finish**.

## Sharing the catalogue data on the server

Install the catalogue data on the server by completing the steps as outlined in *Installing the catalogue data on the server*.

To set up the server to share the catalogue data with other workstations:

1. Double click on **My Computer**.
2. Right click the drive which the catalogue data has been installed on, and choose **Sharing and Security...**
3. Confirm the **Share this folder** check box is selected, and add a share name.
4. Click **OK**.

## Mapping each workstation to the catalogue data on the server

Install the Microcat Application on each workstation by completing the steps as outlined in *Installing the Microcat application on workstations*.

To set up the workstation to map to the shared drive:

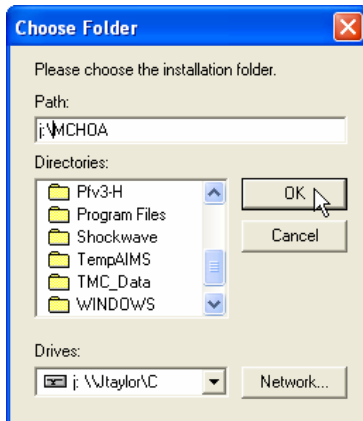
1. Double click on **My Computer**.
2. Click the **Tools** menu and select **Map Network Drive**.
3. Select a drive letter from the **Drive:** drop-down menu.  
Choose any available letter other than 'Z'.
4. Click on the **Browse...** button to select the shared drive on the server machine, and click **OK**.
5. Confirm the **Reconnect at logon** check box is selected, and click **Finish**.

## Installing monthly application updates to each workstation via the server

Monthly application updates can be made via the server after the application has been installed on each workstation. Prior to making the application updates, set up the server to map to the drive on each workstation where the application will be installed. Full administrative privileges for the workstation are required.

To install monthly application updates from the server:

1. Complete steps 1-4 as outlined in *Installing the catalogue data on the server*.
2. Select the type of installation (**Application Only**), and click **Next**.
3. Click **Browse...**, and select the drive and directory for the workstation where the application will be installed.
4. Click **OK**.



5. Click **Next**.
6. Confirm the restart option is selected, and click **Finish**.